

VeryDOC docPrint

User Manual of VeryDOC docPrint

| | |
|-------------------------------|---|
| 1. Brief Introduction | 1 |
| 1.1 Input formats..... | 1 |
| 1.2 Output file format: | 1 |
| 1.3 System requirement | 1 |
| 2. How to Use | 2 |
| Download and Install..... | 2 |
| 2.1 How to register | 2 |
| 2.2 Menu Options..... | 3 |
| Contact Us | 9 |

1. Brief Introduction

(DocPrint) is a Windows printer driver that saves ink, paper and time by controlling printed output. It supports print 2, 4, 6, 8 or 16 pages on a single sheet of paper; it also supports scale A0, A1, A2, A3 papers to standard Letter or A4 paper sizes. It also allows you to add comments, stamp, annotations and others to PDF file.

1.1 Input formats: all the printable files.

1.2 Output file format: Save pages and jobs to BMP, DCX, EMF, WMF, GIF, JPG, MNG, PBM, PCD, PCX, PGM, PIC, PSD, PNG, PNM, PPM, TGA, TIFF, AVS, EPS, JBG, JP2, PDF, PS, EPS etc. files; More Formats

1.3 System requirement

Windows 2000 / XP / Server 2003 / Vista / Server 2008 / 7 of both 32-bit and 64-bit

VeryDOC docPrint

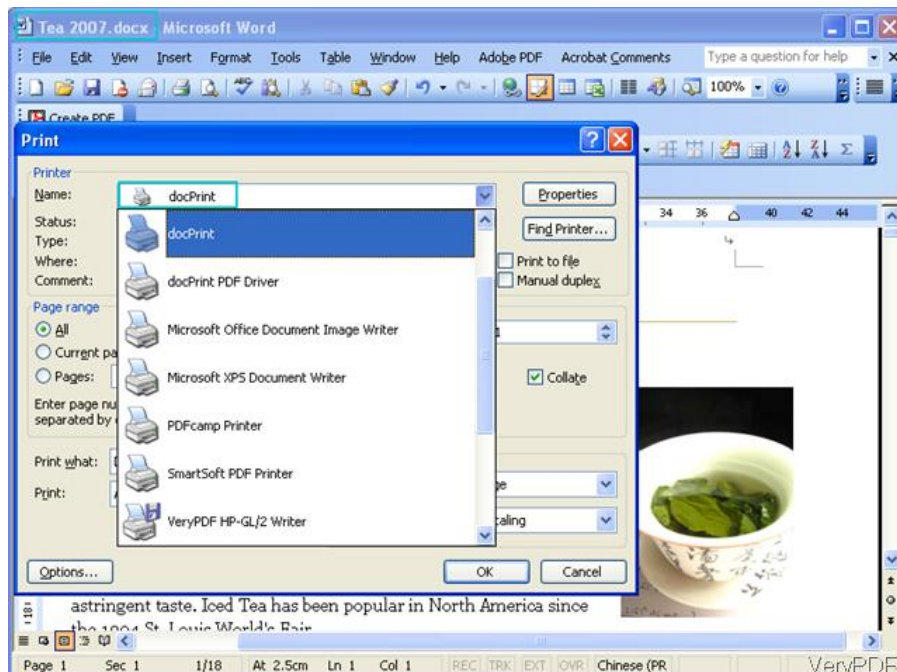
2. How to Use

Download and Install

- [Download docPrint](#) to your PC.
- When you download and run this software successfully, there is no icon on the desktop. . It will be installed together with other printer drivers. Differ with other printer drivers, docPrint is virtual printer.
- You can find this software in the printer list.

2.1 How to register

- Please open a random Office file or website and press “Ctrl+P” on the keyboard to enter the Print menu tab. Choose docPrint as the virtual print and then input the code



- When you enter this menu, there will be dialogue box which reminds you to register this software by the code.

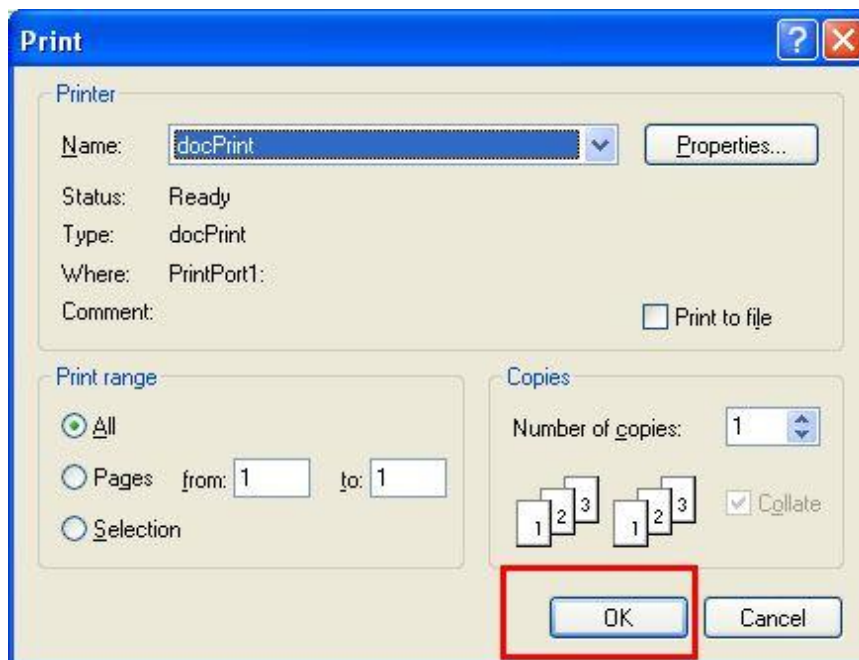
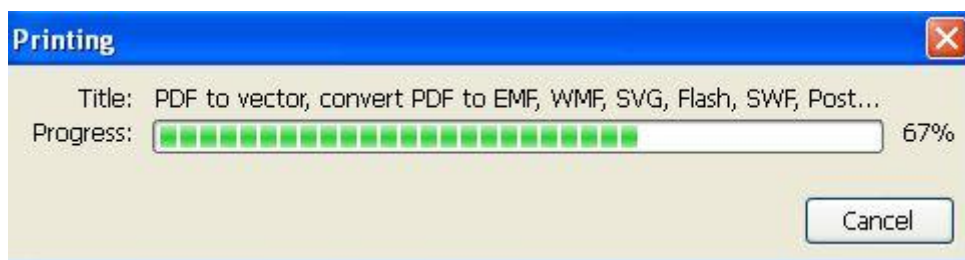
VeryDOC docPrint

2.2 Menu Options

When you use the docPrint PDF driver, there is no preview Window, it will print file directly. So there is no option of it to be explained here. So in the following part, I will mainly explain how to use docPrint driver.

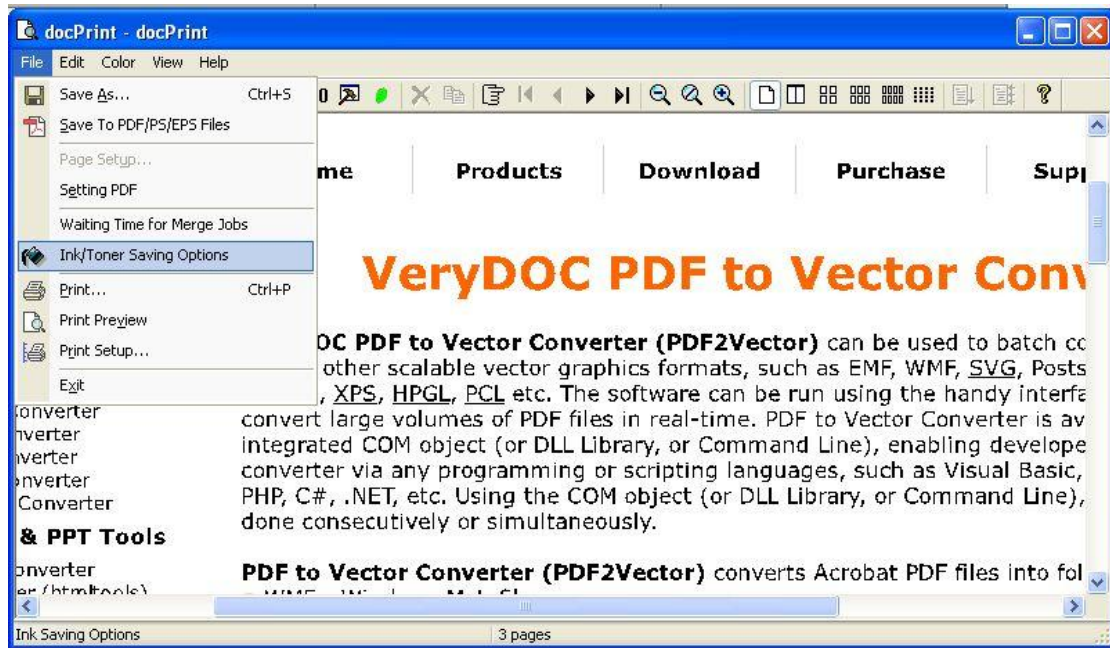
2.2.1 DocPrint driver

When you choose it and click OK, the printing process will begin. Please see details in the following snapshot.



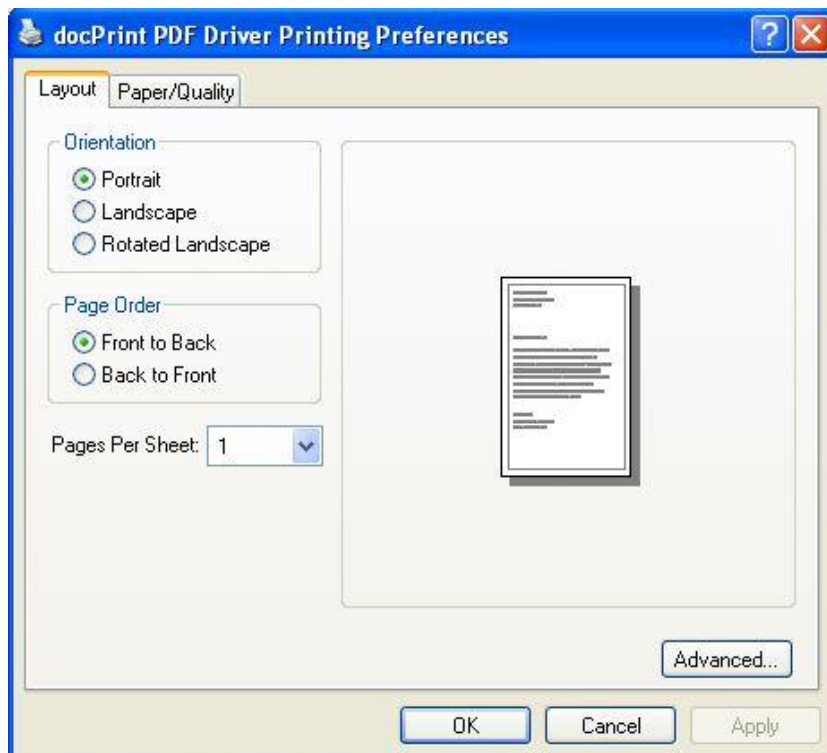
- When the processing finishes, the docPrint interface will show up. Please check details in the following snapshot.

VeryDOC docPrint



2.2.1.1 Save Function

- Click File at the top left corner, then you can see the above drop-down list.
- Here you can save it as PDF or image file directly.
- You can go to the **Setting PDF**, and then you will see the following snapshot. Here you can choose the PDF orientation, printing sheet and page order.



VeryDOC docPrint

- If you need to set more options, please click button Advance.

2.2.1.2. Waiting Time for Merge Job

By this function, you can set time for when to print the file. And it will be better when you need to print a lot of files.

Print

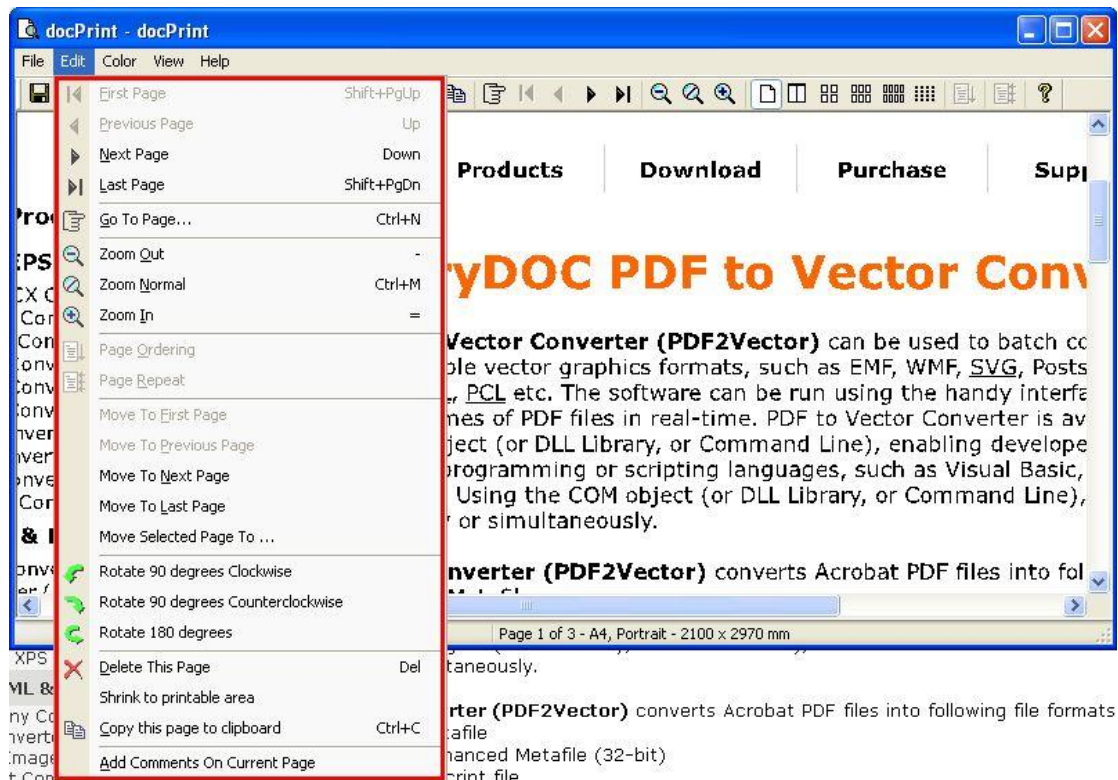
Here you can also choose another printer driver to print this file.

Print Setup

This option is the same as Print.

2.2.1.3. Edit Option

In the red rectangle area, it is about all the options of Edit.

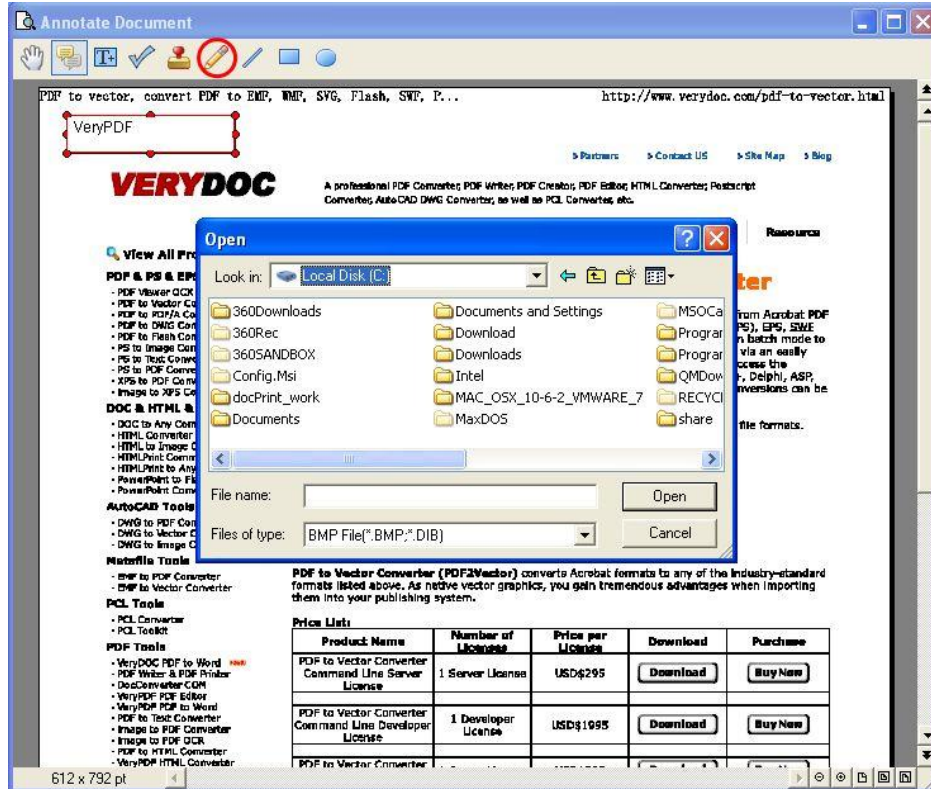


Here you can do the following operations.

- Go to next page, last page or go the specified page.
- Zoom in, out and back to zoom it to normal.
- Rotate page in any degree.

VeryDOC docPrint

- Copy this page to clipboard.
 - Add Comments on the current page. In this option, I will explain more here.
- Simply click the last option **Add Comments on the current page**, and then you will see the following snapshot.



- I will show you a way about how to stamp file during the printing. I will convert this webpage to tiff file and add stamps on it.
- Click Edit then choose **Add Comment On Current Page**.
- First, please click the second icon. If you need to add test stamp, please click Text icon. If you need to stamp by a image, please choose Stamp icon. Then you can add your ideal stamp.
- For the example, I add an image stamp and some text stamp.
- When you finish adding, please save the stamping effect.

VeryDOC docPrint



- The same as add annotations simply click button pencil then you can draw lines, circles and write signatures casually.
- After adding, you can print it directly.

2.3Color Option

When click Color Option then you will see the following snapshot.

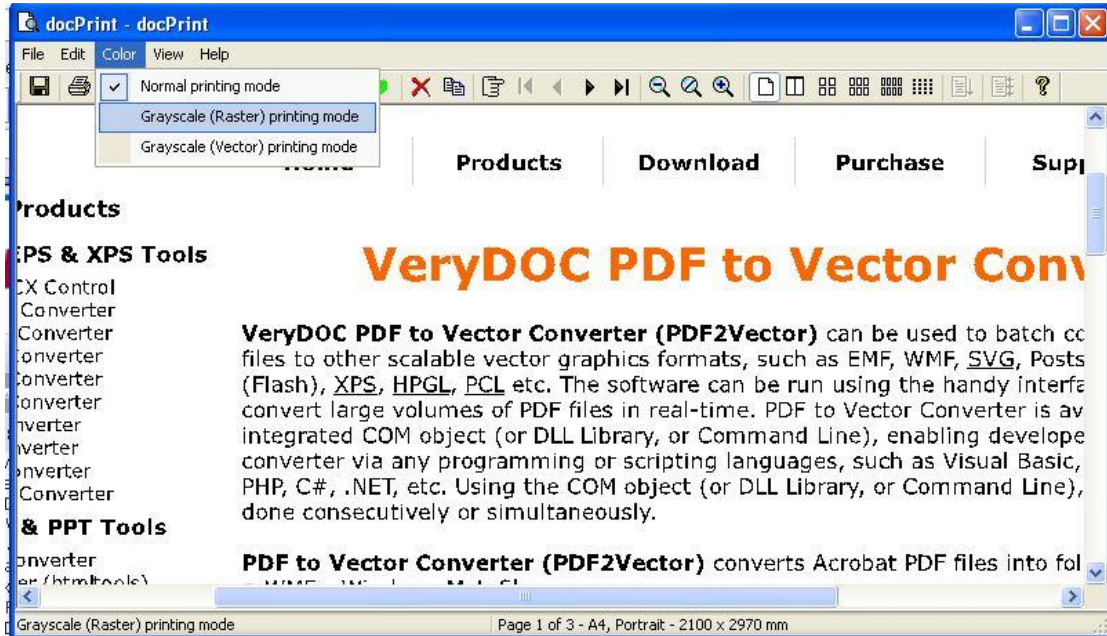
Here are three printing modes for you to choose.

Normal Print Mode

Grayscale Rater Printing Mode.

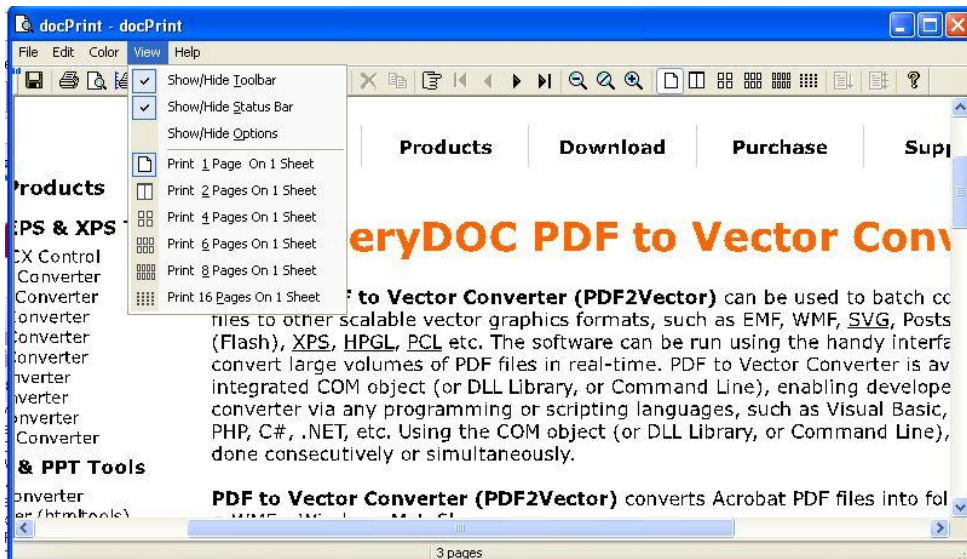
Grayscale Vector Printing Mode.

VeryDOC docPrint



2.4 View Option.

When click Color Option then you will see the following snapshot. Those options are easy to understand. Here you can choose how to print the file. One page in one sheet or more in one sheet. Show or hide toolbar.



Up here, all the functions have been introduced.

VeryDOC docPrint

Contact Us

During the using, if you have any question, please contact us as soon as possible. Send us a ticket to support@verydoc.com

Or contact us by the ways supported on our [contact us website](#).